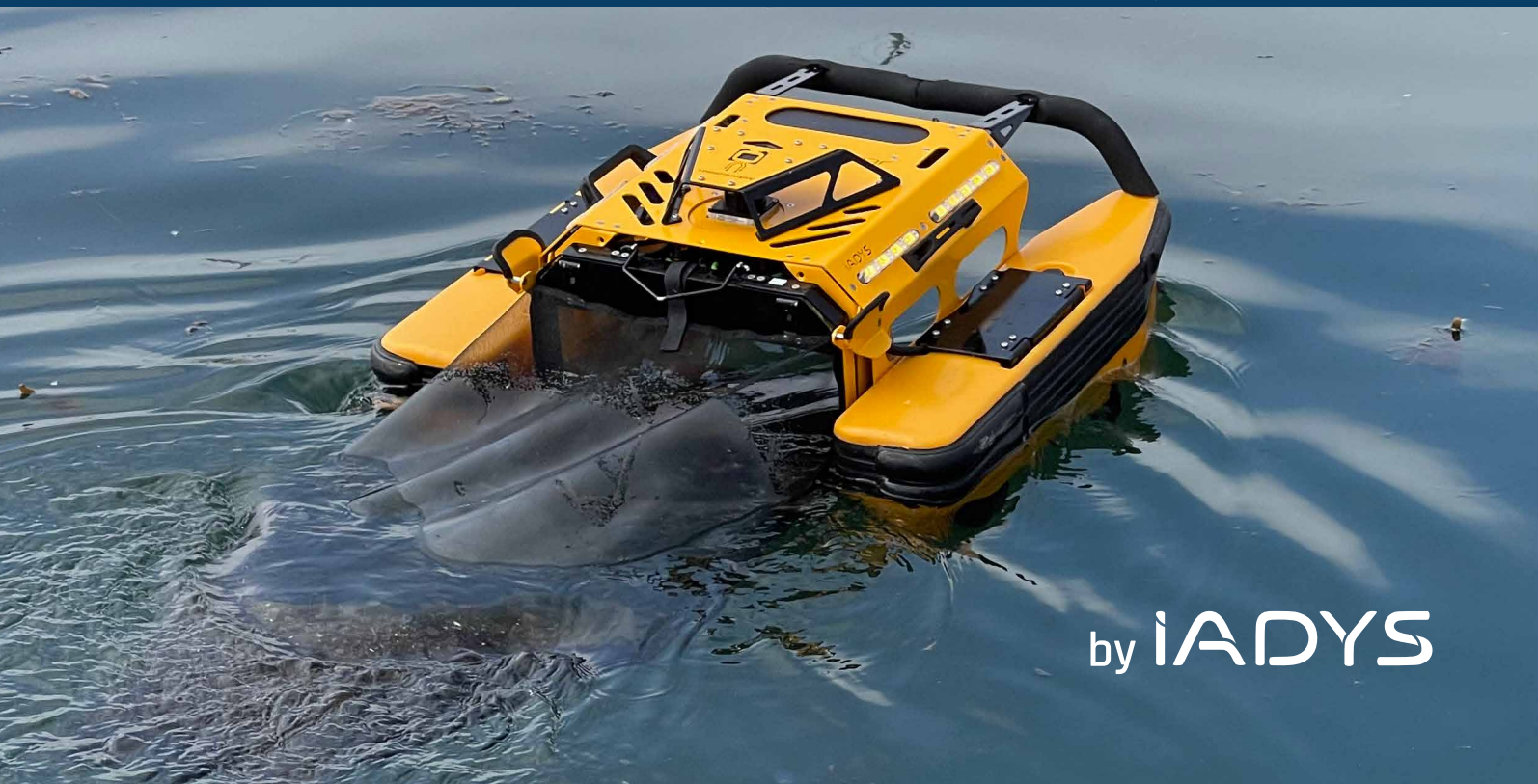




JELLYFISHBOT



by iADYS

JELLYFISHBOT FEATURES



Dimensions & weight

70 x 70 x 48 cm / 2.3 x
2.3 x 1.6 ft
23 cm / 0.75 ft of draft
20 kg / 44 lb



Speed

1 knot (optimal)
2 knots (max)



Covered area

1 000 m²/h
10 764 sq ft



Autonomous

autonomous navigation with underwater
& surface obstacles avoidance



Energy

2 batteries
6 to 8 h of autonomy
recharging time of 2 h



Materials

polyethylene
aluminium alloy



Thrust

multidirectional (3 thrusters)
forward, backward, sideways movement
rotation on itself



Remote control

1 km of range control
integrated screen with JellyfishApp





- **Removable fastening system for nets**
underwater probes equipments



- **Connectivity**
WiFi
Bluetooth
3G, 4G, 5G
GPS



- **Safety**
buzzer
warning lights



- **Onboard camera**
1920 x 1080 px (30 fps)
120° horizontal angle



Made in France
Patented collection system

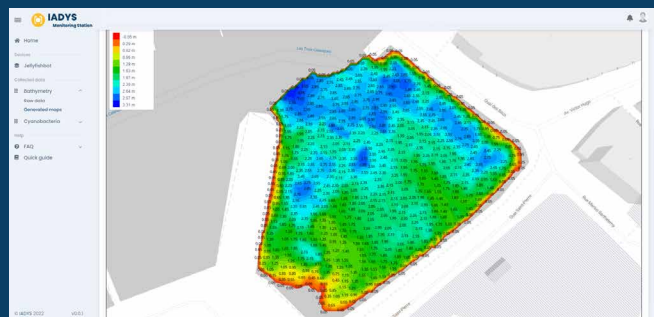
FOCUS ON

JellyfishApp



Interface of mission management & sensor data visualisation, integrated into the remote control.

IADYS Monitoring Station



Web platform for smartphone and computer. It allows the analysis of the data collected by the robot (water quality metrics and bathymetry) and generate maps from the data collected.

SWISS ARMY KNIFE ...

Inspections

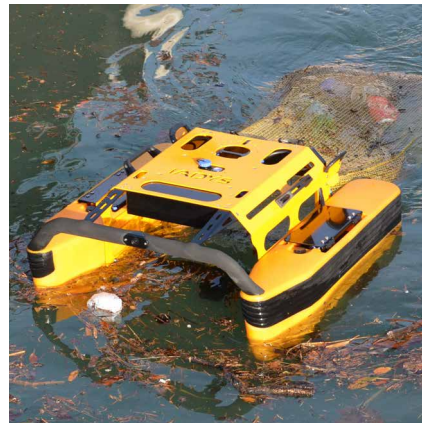


- **Surface camera** to control the robot out of sight and perform remote inspections or inspections in hard-to-reach areas
- **Underwater steerable camera** for inspection of near-surface infrastructure

Waste collection



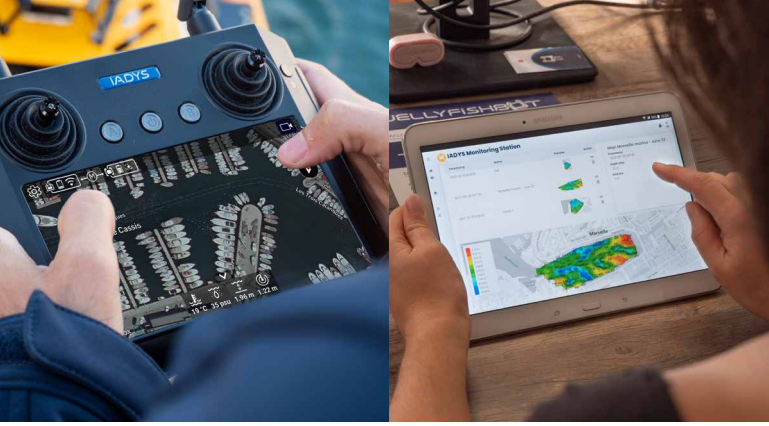
- **Disposable, reusable or upcycled nets of different mesh sizes** (150 μ m to 1 cm) **for macro and micro-waste:** floating plastics, cigarette butts, golf balls, duckweed, paint dusts, micro-plastics...
- **Trawl for branches & macro-waste** (between 40 & 50 kg / 88 & 110 lb)



Oil collection



- **Autonomous oil skimmer** (60-120 L / 16-32 gal)
- **Absorbent booms**
 - 3 m / 9.8 ft (30-80 L / 8-21 gal)
 - 6 m / 19.7 ft (60-165 L / 16-44 gal)
- **Ultra-Rapid Boom** (15 m)
- **Anti-pollution trawl** (150 L / 40 gal)
- **Absorbent spaghetti** (30 L / 8 gal per net)
- **Absorbent leaves** (> 1 L / 33 fl oz per leaf)



- Real-time **water depth measurement** on JellyfishApp
- **Bathymetric maps** generation from IMS*

Bathymetry

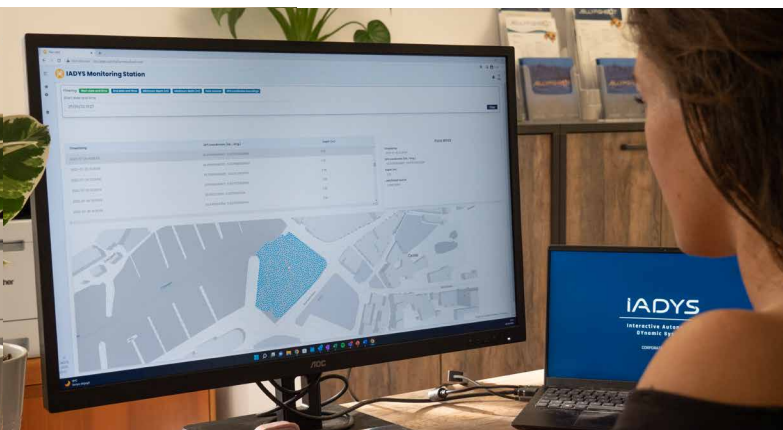


... FOR DEPOLLUTION AND PRESERVATION OF WATER

- **Geolocated liquid collection** (2 x 100 ml / 3.38 fl oz) **for sampling and laboratory analysis** (e.g. concentration of E. coli, intestinal enterococci, hydrocarbons, cyanobacteria, phytoplankton, chemical pollutants, pH control...)



Sampling



- Real-time **display of data measured by the robot** (depth, temperature, salinity, concentration of cyanobacteria, etc.) on the remote control
- **Data visualisation & processing on IMS*** with map generation

Data measurement



*IMS = IADYS Monitoring Station

JELLYFISHBOT

IMPACTS



Help to improve
water quality



Awareness-raising among
the population regarding
environmental protection



Protection of aquatic
biodiversity



Safety & improvement of the
user's working conditions



No polluting emission in the
air, thanks to its electric
batteries



Reduction of floating waste
and oil before dispersal of the
waste in open sea

3 BONNE SANTÉ
ET BIEN-ÊTRE



6 EAU PROPRE ET
ASSAINISSEMENT



8 TRAVAIL DÉCENT
ET CROISSANCE
ÉCONOMIQUE



11 VILLES ET
COMMUNAUTÉS
DURABLES



13 MESURES RELATIVES
À LA LUTTE CONTRE
LES CHANGEMENTS
CLIMATIQUES



14 VIE
AQUATIQUE



17 PARTENARIATS POUR
LA RÉALISATION
DES OBJECTIFS



IADYS is committed to reducing its impact & the
Jellyfishbot's one on the environment.

Through an ambitious CSR program, we have identified
7 UN SDGs on which we have the most impact and on
which it is essential to act now.



IADYS CSR POLICY

IADYS has built its CSR policy around 12 issues and strives every day to respect the commitments made as an integral part of the values it holds and claims.



Find them online

1

Attention & commitment to the collective success

- Guaranteeing employees their rights and well-being
- Ensuring fair practices
- Providing a healthy, safe and pleasant working environment
- Strictly controlling subcontractors and suppliers

2

Action for ecological transition, creation of sustainable solutions & services

- Implementing a general environmental policy
- Using resources sustainably
- Considering climate change in business development
- Protecting aquatic biodiversity
- Contributing to the UN SDGs

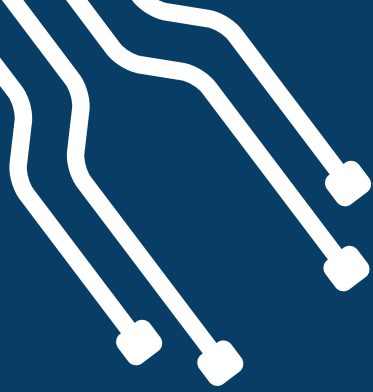
3

Solidarity-based partnerships with communities & territories

- Integrating disabled people and work with centres providing care through employment
- Designing and manufacturing products in France in our premises with local suppliers
- Creating partnerships with associations to raise awareness of environmental preservation

PARTNERS & SUPPORTERS





IADYS

Interactive Autonomous
DYnamic Systems

www.jellyfishbot.io



Immeuble LIBER 1 - N°Z09
ZA Le clos du rocher
13830 Roquefort-la Bédoule
France

+33 (0)9 87 03 65 47
www.iadys.com
contact@iadys.com



Geneva Int. Exhibition of Inventions,
Public's choice award 2019



Clean Tech Open France,
Laureate



i-Nov «Investing in the Future» program,
Laureate