

Explore with purpose

End plastic pollution



Regenerate nature

**NOMAD
PLASTIC**

Nomad Community - Nomad Energy - Nomad Archipelago

United by the same **passion for the Ocean**



Exploring its treasures makes us feel alive





We grew stronger by visiting some
of the **most remote places on Earth**

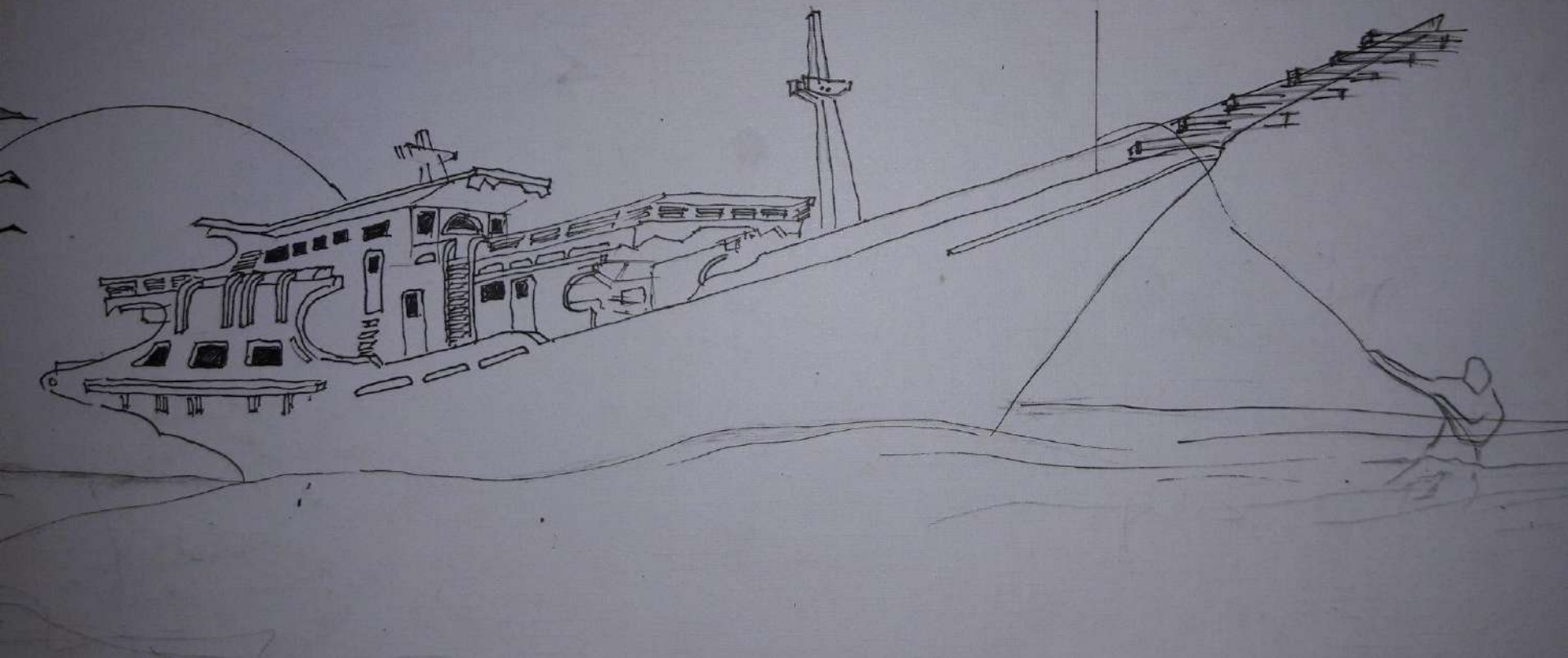


**And yet there is always
more to discover and learn**

As long as you take the time.



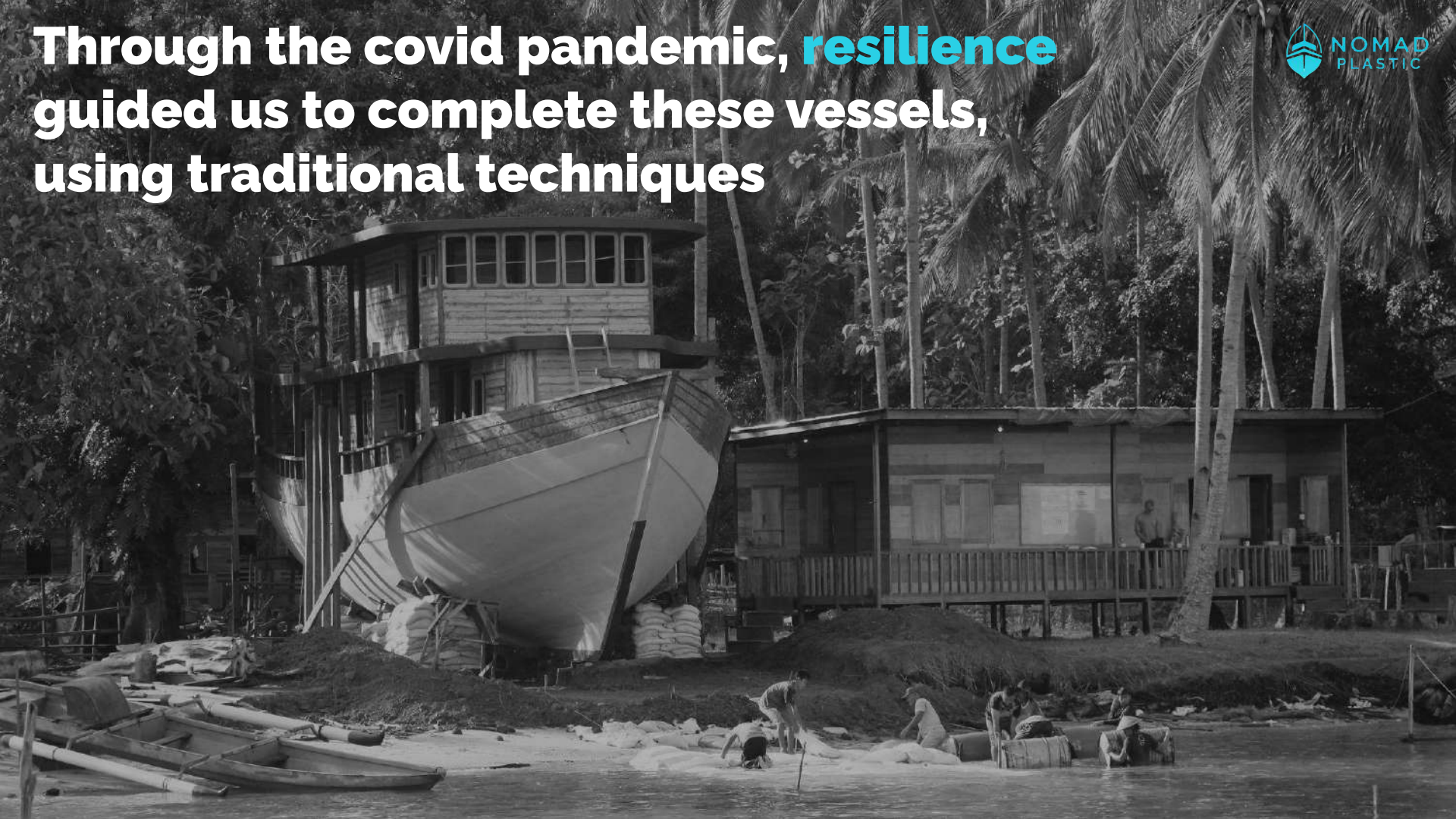
Sharing the same dream to come
back to the essence of **slow travel**





**We embarked on the construction
of two ships to [follow this vision](#)**

Through the covid pandemic, **resilience** guided us to complete these vessels, using traditional techniques



A high-angle, perspective view of a boat's deck covered in solar panels. The panels are arranged in neat rows, leading towards a central white structure. The background shows a harbor with many boats and buildings under a cloudy sky.


**As well as simple technologies to
lower our carbon footprint**

This is how **Nomad Archipelago** is born:
unique cruises, sustainable by design.



Signature cruise
with the **Sea Nomads**





But on this journey, we were struck by plastic pollution, and kept on exploring but this time with purpose.

A fish trap, looking more like a plastic trap, Indonesia



Everywhere we go, we witness
a **growing problem.**

Causing **ecosystems destruction**,
affecting the rich biodiversity and
human livelihoods that strongly
depend on it.





NOMAD
PLASTIC



**That's why we created
Nomad Community**



A local NGO to engage with villages
and train **local champions**



Building long-lasting bounds
with nearly **10 villages** so far

Integrating a **waste collection** **program** to save the Ocean



With communities taking progressively **leadership** on actions.



But what do we do with
these **low-value plastics**?



**Sending waste to landfill is
simply not enough.**






**Contrary to high-value plastics like
PET bottles, all sachets, plastic
bags, multilayers find no market**

And even reverse logistics is costly and carbon-intensive, hence the need for local transformation and local markets



**This is why we partnered up with Plastic
Odyssey, fellow explorers and experts with
solutions to transform plastics**





Waste-to-fuel turned out to be the best alternative for low-value plastics in those remote coastal areas

Geo Trash Management's facility in Lombok, Indonesia



Giving value to materials that had none, enabling an **incentive across the value chain and a local economy.**

With **mobile and low-tech** solutions as well, to access the most remote coastal areas and islands.



Extra revenue for the entire ecosystem is generated through **plastic credits** for every kg of waste, with the support of corporates





This is how we created the **Nomad Energy program
in partnership with Geo Trash Management (**GTM**)**

We can then **fuel cruises** to explore these beautiful areas while having the most positive impact



As well as give **access to energy**
to coastal villages and islands to
improve livelihoods and the economy



Finally, we give back to nature by allocating profits, enabling marine biodiversity conservation



In partnership with strategic partners like **Blue Finance**, co-managing Marine Protected Areas and **Tompotika Foundation**



**Because no nature = no business
= no livelihoods ...**

At the heart of our model: **unifying the ecosystem**, bringing collaborations between communities, businesses and conservationists.



We started from **fragmented ecosystems** lacking interactions and threatened by plastic pollution



**Local
Communities:**
Engagement

*Impact from plastics on health
and hygiene,*

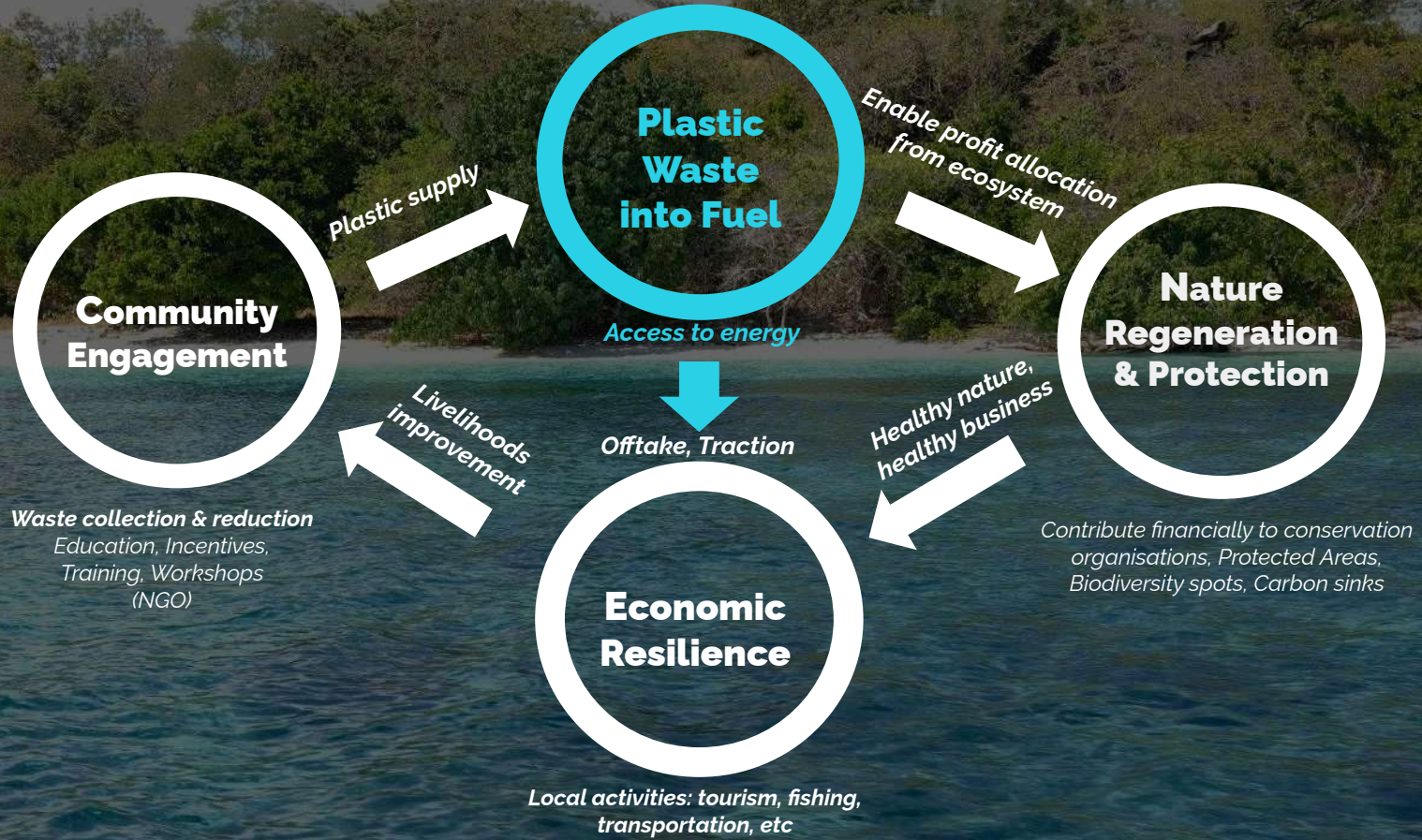
Businesses:
Economic
Resilience

*Plastic pollution threatening fishing
activities as well as tourism*

**Nature
& Biodiversity:**
Protection &
Regeneration

Plastics suffocating marine ecosystems

And developed a model bringing circularity within ecosystems, **by leveraging plastic waste transformation.**



We started building a pilot following this model to prove the concept: “Regenerative cruises” in Indonesia



Upon completion, we have a strong ambition to replicate and **end plastic pollution and regenerate nature** with clear targets for **2030:**



+50 projects in South-East Asia and Africa



Yearly capacity of **10,000 tonnes** of plastics recycled



Rehabilitation of **100,000 ha** of biodiversity hotspots



Our outreach is already growing, with an increasing pipeline of projects across Asia and Africa



Now we need your help to complete our pilot and grow our impact!

Grants required

Loan required

Ready to go

Ready to go



WHERE WE ARE NOW

Community engagement & waste collection

Plastic waste transformation into fuel

Fuel offtake for businesses & communities

Give back to nature: Protection & Regeneration

**Here is how
we can help:**



**Looking for donations
or CSR support to grow
our impact with our NGO
Nomad Community**



**Looking for a USD 400,000
concessional loan to build
our first waste-to-fuel station
in Indonesia with GTM**



**NOMAD
PLASTIC**

Team



Pierre ROUSSEAU
Co-founder
& Executive Chairman

Sustainable Finance
30+ years experience
Ocean & cruising lover



Jean-Michel CHALANT
Co-founder
& Cruise Director
@Nomad Archipelago

Traveler & cruising expert
in Indonesia



Denis LEJEUNE
Head of Operations
@Nomad Archipelago

Mechanical & electrical
engineer



Jean-Baptiste GRASSIN
Managing Director
@Nomad Plastic
Manager Nomad Energy

Engineer & Plastic waste
management expert
Recycling Project
developer



Afa
Manager
@Nomad Community

Community engagement
& waste collection
program specialist

Nomad Community - Nomad Energy - Nomad Archipelago



NOMAD
PLASTIC

Partners



Blue finance

PLASTIC
ODYSSEY



SOLARIMPULSE
FOUNDATION



McGill
UNIVERSITY



CONTACT US!

Jean-Baptiste GRASSIN

Managing Director

jb.grassin@nomadplastic.com

Pierre ROUSSEAU

Co-founder & Executive Chairman

pierre.c.rousseau@nomadplastic.com



Nomad Plastic



@NomadPlastic



@wearenomadplastic

