



**Smart Data for
Maritime shipping**

**Container Context &
emission reporting**

HUGE GROWING MARKET

Smart Data for Maritime Shipping

Intermodal¹ Maritime shipping market:

- **10,000** container ships; **+22M** containers , inc. **2M** reefers (refrigerated container)
- x10 more efficient than truck / x100 than air travel (energy/ton/km)
- 25% of dry and 100% of reefers **connected by 2026²**

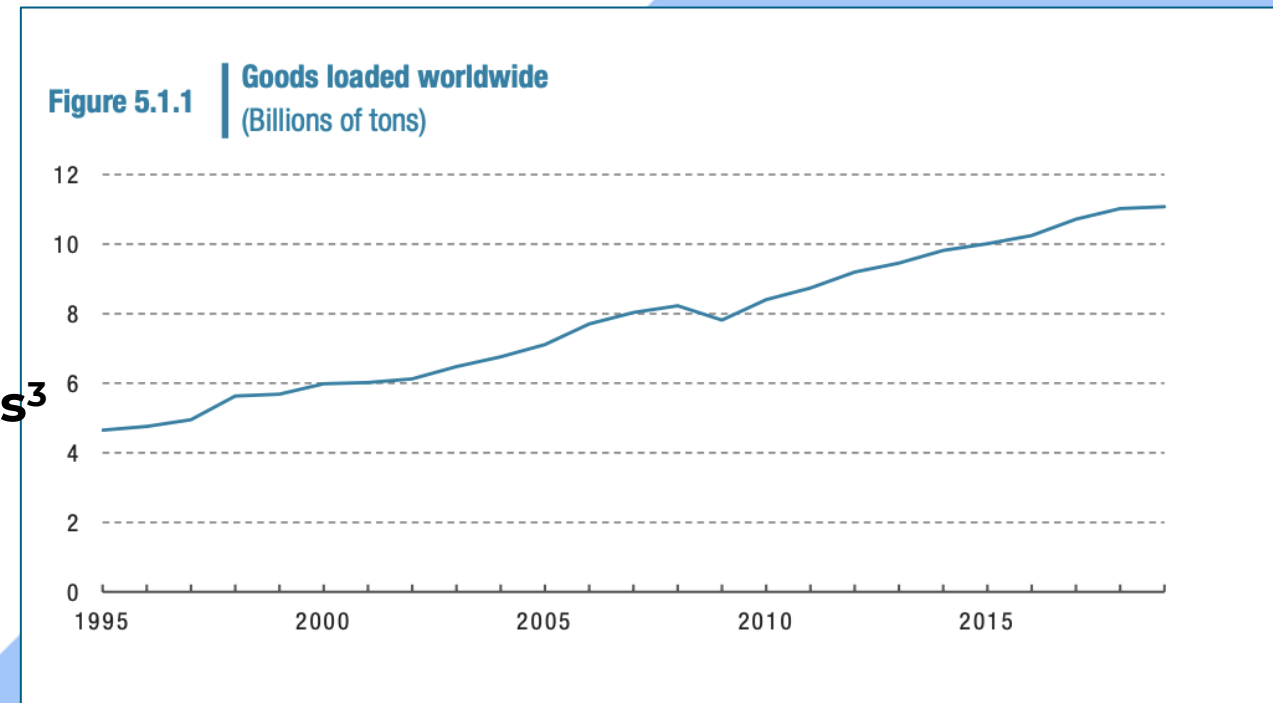
Major challenges:

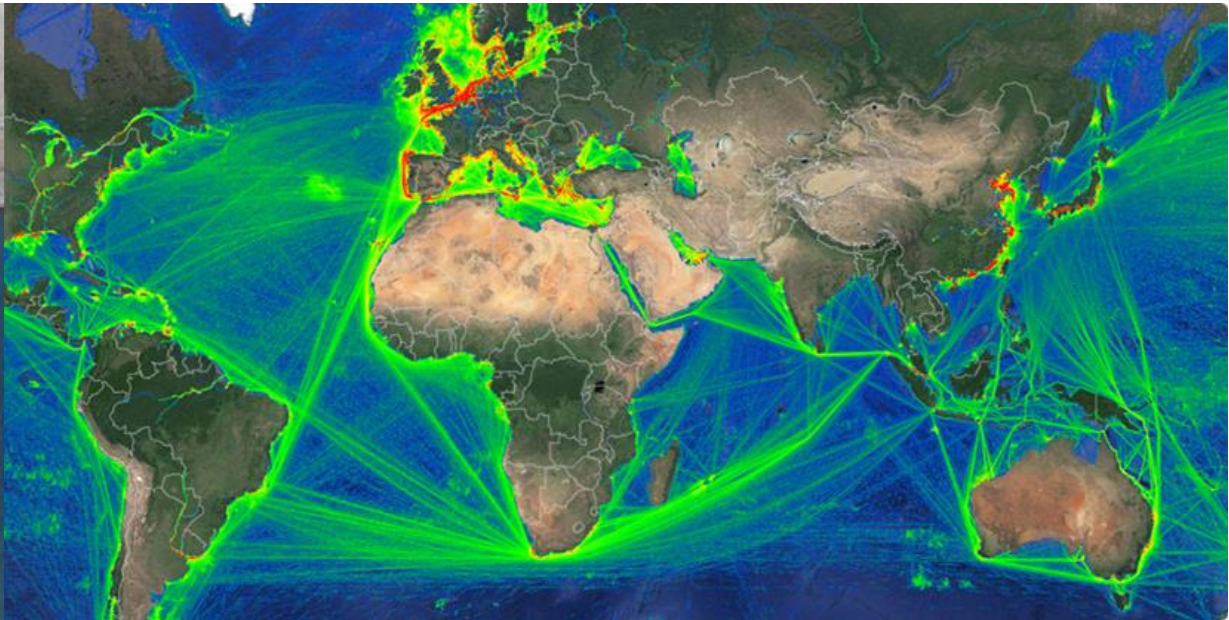
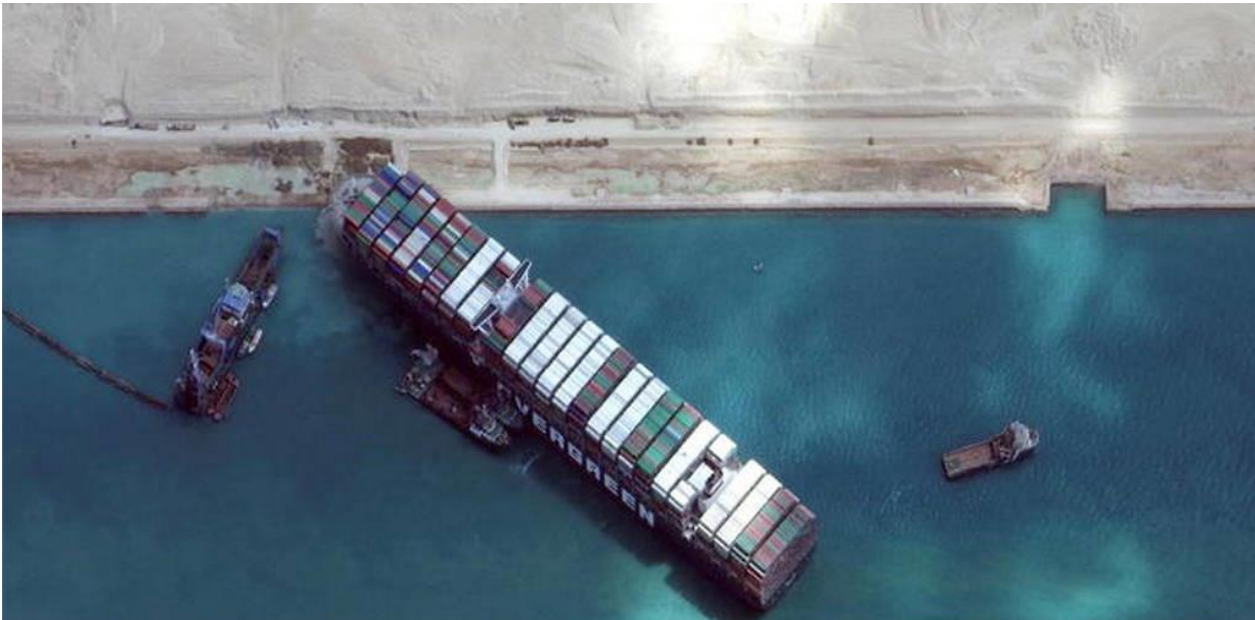
- Late on digitization
- Needs for cost optimization
- Carbon taxed in **2023 (EU ETS)**
- **350 million tons CO₂e** emission / year inc. **est. 60 million tons CO₂ from reefers³**

Note 1: container-based shipments

Note 2: Drewry 2022

Note 3: prop and use energy





100 tons CO₂e / day from reefers
- on this picture

 **BluePulse** is

- ✓ A data-driven company **specializing in AI**
- ✓ Focusing on **container IoT data**
- ✓ **Hardware agnostic** (any hardware, any sensor)
- ✓ Operating a SaaS platform **for time series**
- ✓ Building **patented technologies** (patents filed)

We transform **data** into **information & insights**

IMPLEMENTATION & FEATURES

Smart Data for Maritime Shipping

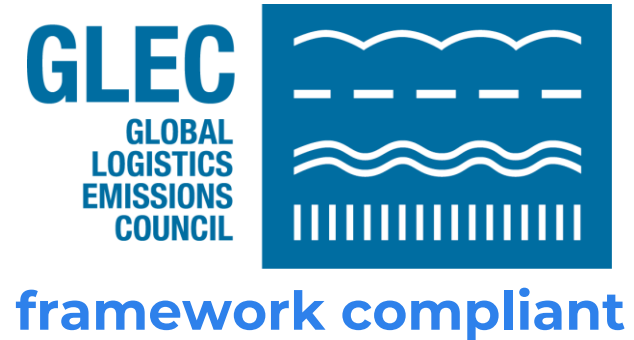
Available on a **SaaS** & **KPI reports** implementation :

Existing features :

- **Sea/Rail/Road/Port** tracking for dry & reefers
- **Scope 1 GHG emissions** for dry & reefers
- **Energy tracking & prediction** for reefers
- **Scope 2 GHG emissions** reporting
- **Event detections** for reefers
- **Efficiency index** for reefers

Upcoming features:

- **Temp breach** predictions
- **In Port zone** tracking (3 labels - CY, CFS, Quay)

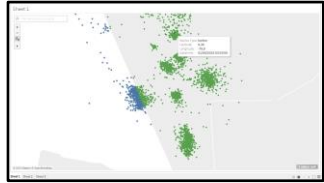
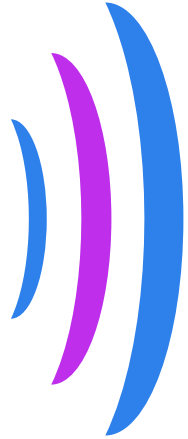


CONTAINER CONTEXT - BLUELOGISTICS

Smart Data for Maritime Shipping

Context enrichment for any container

IoT data
GPS



Sea/Harbor/
Road/Rail



Port geo fencing
+ GPS accuracy
increase



Context:
On truck, on train, on barge, on vessel, on land
In port : on storage, on quay, on CFS

Carbon Accounting:
CO₂ tracking
CO₂ accounting ¹
Scope 1 & 2 GHG reporting

Note 1: Comply with EN16258 standards & GLEC framework

CONTEXT ENRICHMENT : World polygon database



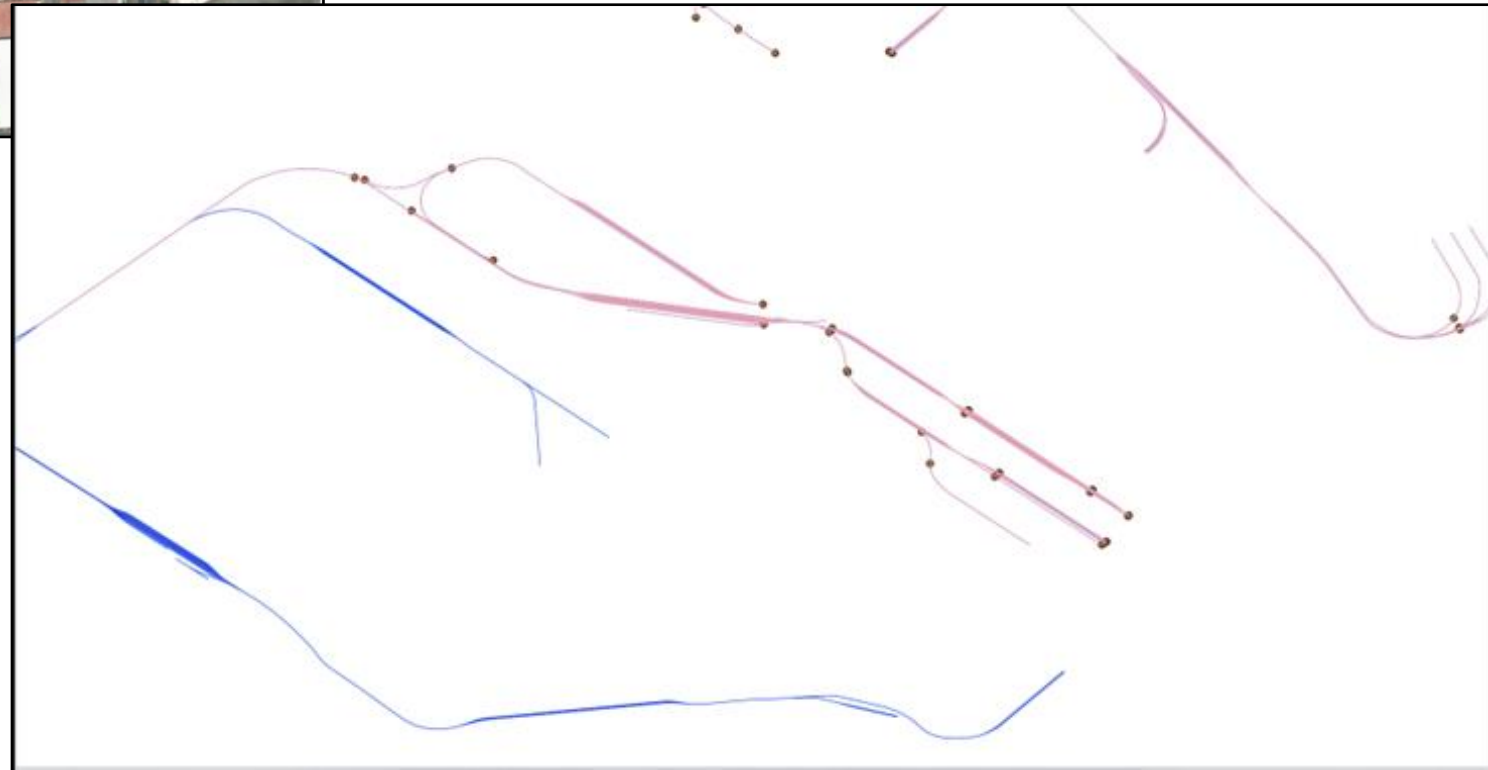
Example: Railways for Fos sur Mer Container port (Red lines)

Sea / Inland tracking

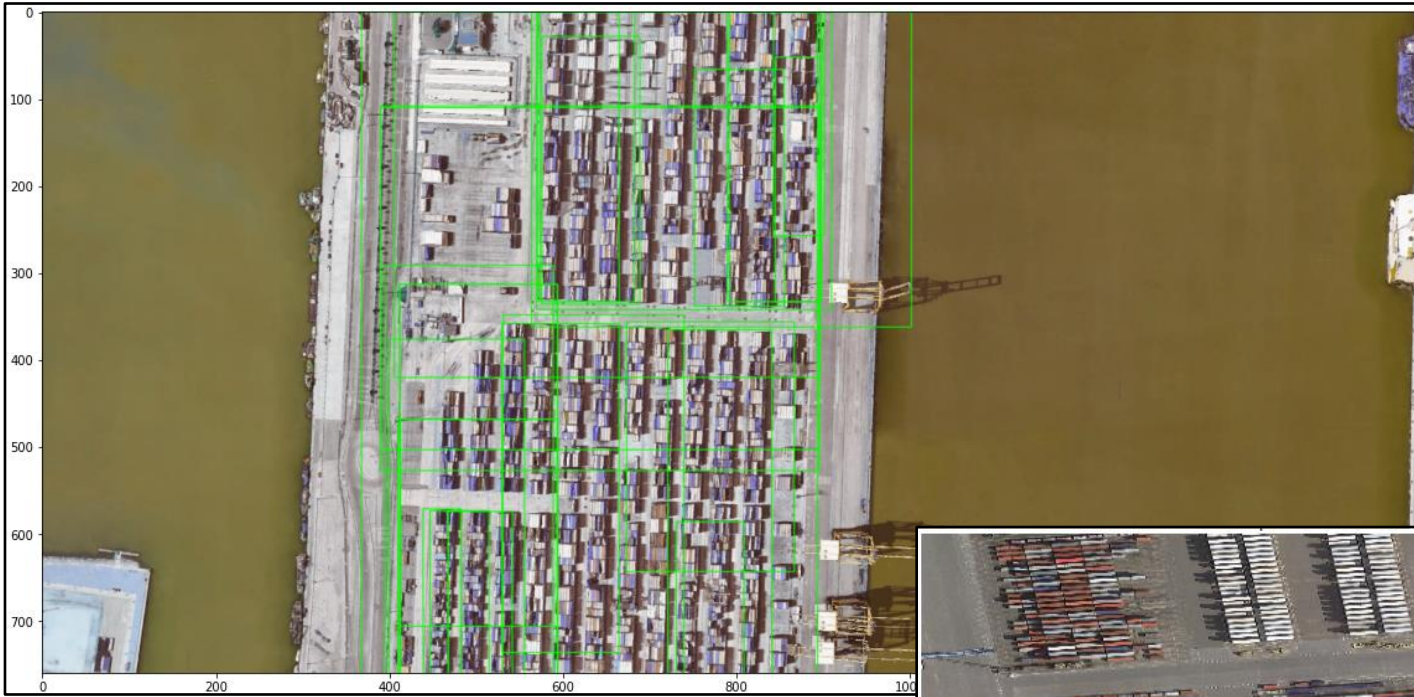
Current polygons:

- **Sea**
- **Waterways** (canals, rivers, lakes)
- **Railways**
- **Highways and roads**
- **Land**

Upcoming **“in port”** zones

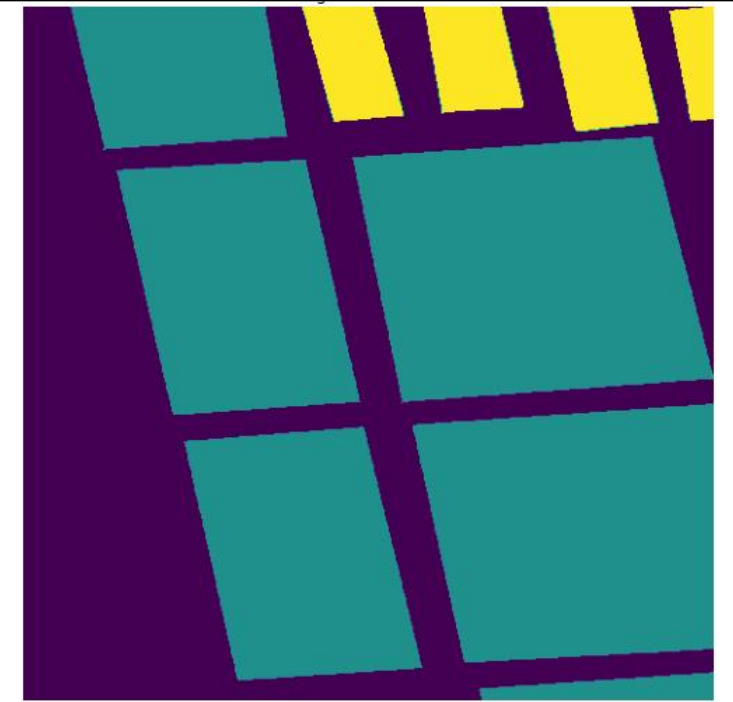
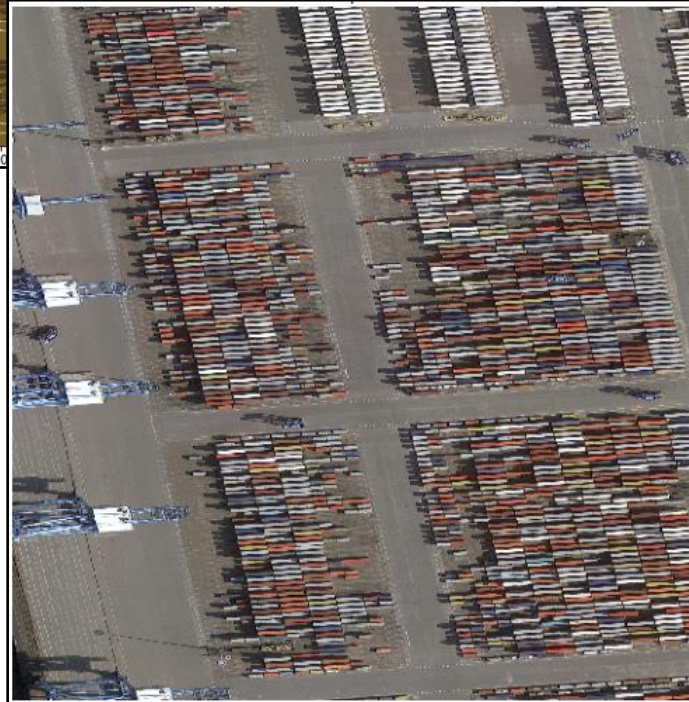


IN PORT GEO LOCATION : Storage, Quay, CFS



1) Image Classification :
automatic container **zone detection**

2) Image label: automatic **zone description**
Storage (green) & Reefer (Yellow)



SOLUTIONS **BENEFITS**

Smart Data for Maritime Shipping



- ▶ Identify reefer **best fit** for each routes – *10/15% savings*
- ▶ Report of reefers **losing efficiency** – *PTI optimization*
- ▶ GHG & CO₂ **accounting & reports** – *Carbon credits*
- ▶ Trip **context & qualification** – *geo fencing and alerts*
- ▶ Energy & CO₂ **prediction** – *energy optimization*



bluepulse

MERCI

Visit now:

www.bluepulse.ai

 Bluepulse