



**SCALE**

SEA FURTHER

## AN UNCOMPROMISING AMBITION

INVENT A NEW GENERATION OF OCEAN FRIENDLY MATERIALS  
MADE FROM RENEWABLE MARINE BY-PRODUCTS,  
MATERIALS WHICH ARE BIOBASED, BIODEGRADABLE,  
AND 100% RECYCLABLE



OUR  
GOAL



NON-TOXIC



## FISH SCALES

AN ABUNDANT, RENEWABLE AND LITTLE VALUED  
RESOURCE AVAILABLE WORLDWIDE



DEPOSIT

TOTAL ESTIMATED IN EUROPE

SALMON : 20 KT / YEAR

SARDINE : 25 KT / YEAR

TOTAL ESTIMATED IN THE WORLD

ALL SPECIES : > 1 MT / YEAR

# SCALITE®

SCALITE, OUR FIRST MATERIAL, IS EXCLUSIVELY MADE FROM FISH SCALES, A BYPRODUCT OF THE FISHING INDUSTRY.



SCALITE TACKLES 4 OF THE SUSTAINABLE GOALS OF THE U.N.  
SUSTAINABLE DEVELOPMENT GOALS.

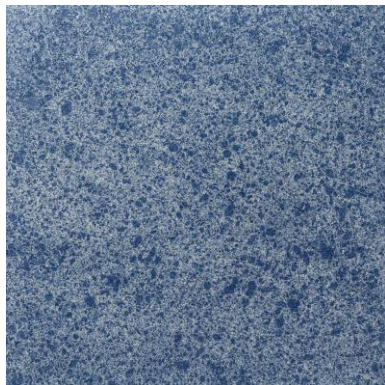


# SCALITE®

1<sup>st</sup> bio-material 100% made from a renewable sea resource

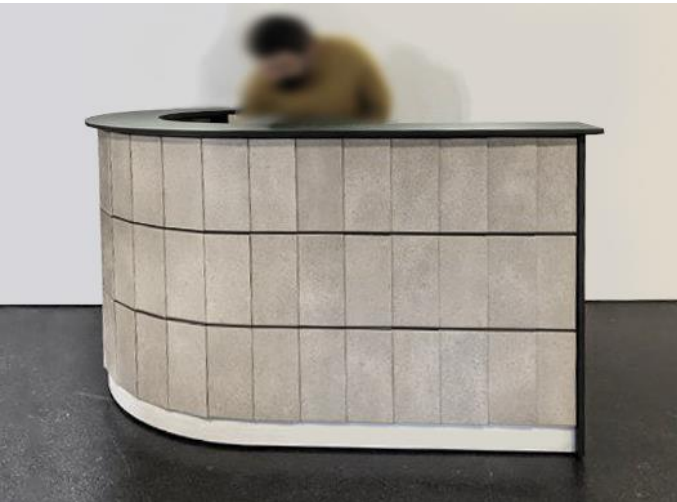
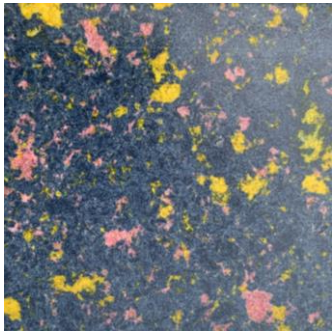


OUR  
SOLUTION



This marble-like material is available in sheets of **300\*300\*10 mm** (600\*600\*10 mm by S2 2022).

- OCEAN-FRIENDLY
- BIODEGRADABLE
- FULLY RECYCLABLE
- CRADLE TO CRADLE
- SCRATCH RESISTANT
- COV & FORMALDEHYDE FREE
- WIDE RANGE OF COLORS
- NON-FLAMMABLE (M1- B, S2, D0 )
- CAN BE PROCESSED WITH CONVENTIONAL TIMBER TOOLS
- SCALE BASE ADHESIVE ASSEMBLY
- LOW ENERGY-LOW CARBON





PROJECTS



TABLE, GLASS TOP AND SCALITE® (DETAIL ON THE RIGHT )  
DIMENSIONS H 74 X DIAM 90 CM



PROJECTS

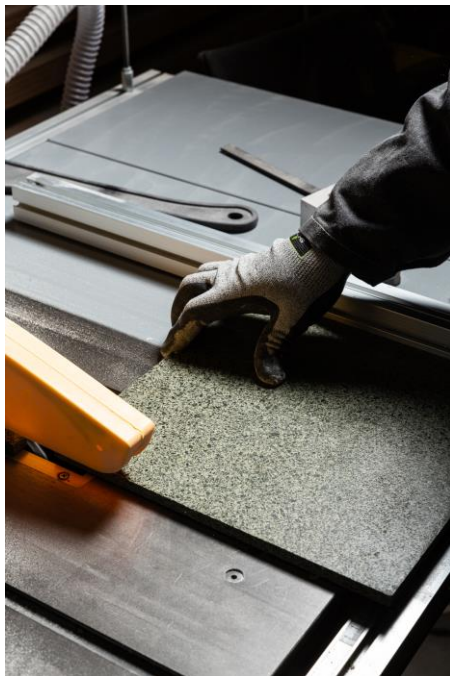


SCALITE® LAMINATED / BONDED ONTO MULTIPLI





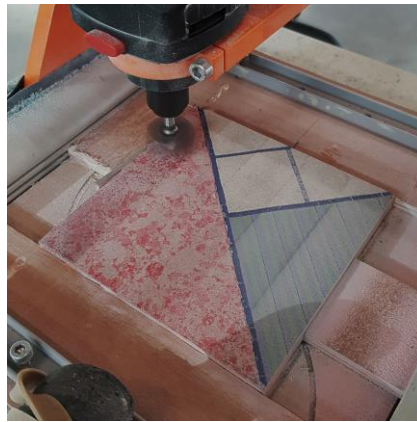
PROJECTS



SCALITE® CUT, ENGRAVED OR ASSEMBLED WITH OUR OWN ADHESIVE



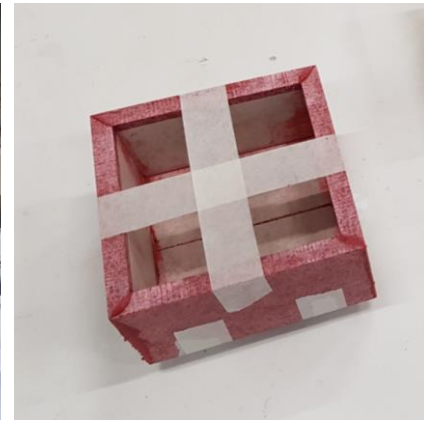
Cutting : circular saw, band saw,...



CNC machined



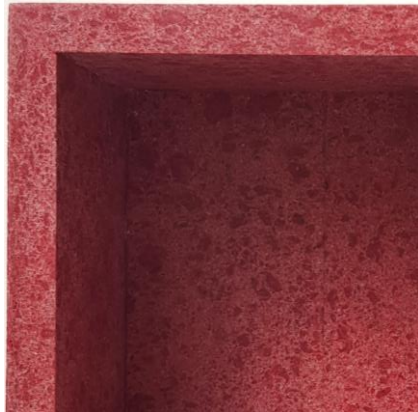
Fine sanding



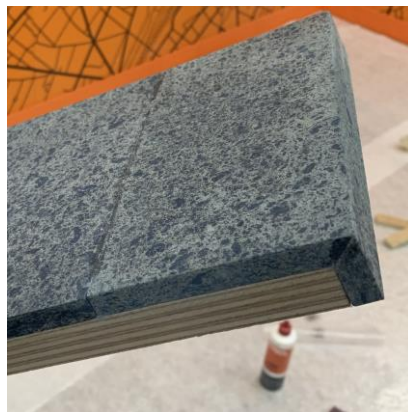
bonding



**IMPLEMEN  
TATION**



Assembly



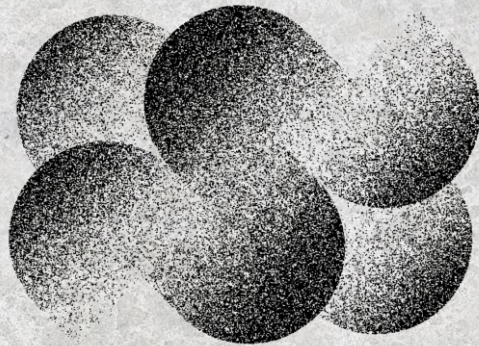
Laminated on plywood panel



Laminated on leather



Laminated on wood



# M E R C I



Communauté  
D'AGGLOMERATION  
**PAYS BASQUE**  
**EUSKAL**  
HIRIGUNE  
Elkargoa

**bpi**france

**ADEME**



Agence de l'Environnement  
et de la Maîtrise de l'Energie