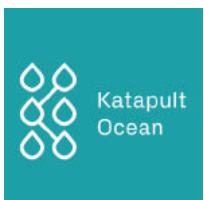


ARC Marine[®]
ACCELERATING REEF CREATION

Proud Members Of





REEF INNOVATION IS IN OUR NATURE

ARC Marine is an award-winning UK company focused on nature inclusive design & high-tech monitoring services. Our mission is to accelerate reef creation around the world and change forever the way mankind interacts with the marine environment to benefit people and the planet. We understand that sometimes man-made structures have to be placed in the ocean. Our passion is to make them as beneficial as possible for marine life whilst delivering added value to our clients.

We are continuing to evolve by pushing boundaries with the latest reef technology, materials & monitoring techniques.

**ARC Marine**[®]
ACCELERATING REEF CREATION



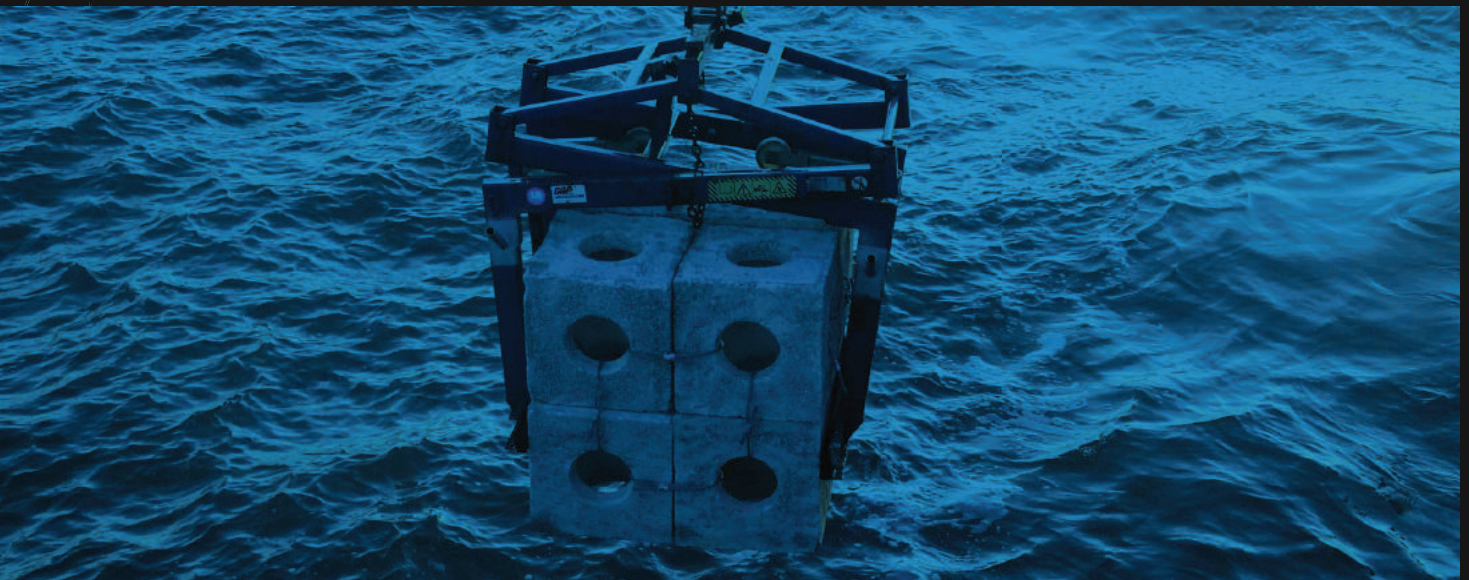
CONTENTS

01 Our Vision

02 Services & Expertise

09 Industries & Testimonials

06 Core Values



08 Media

09 Achievements

10 Our Team

12 Reef Cubes®



OUR VISION

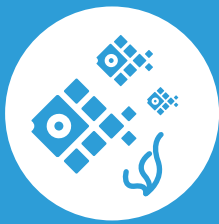
Our vision is to become world leaders in accelerating reef creation & nature inclusive design. Pioneering the long-term stewardship of man-made reef systems to restore ocean health and ensure its survival for future generations

▼

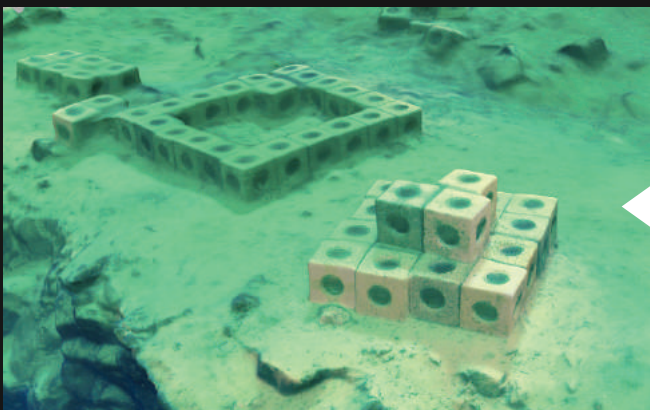
Globally there has been a trend of habitat degradation and biodiversity loss since pre-industrial times as a result of human activity.

SERVICES & EXPERTISE

Ecological engineering is our passion and we use our specialized products and services as the tool kit to enhance and restore natural biodiversity in the oceans.



ARC Marine provide a turn-key solution, offering bespoke design, manufacturing, deployment and monitoring capabilities for eco-centric optimisation of projects.



Man Made Solutions, To Man Made Problems



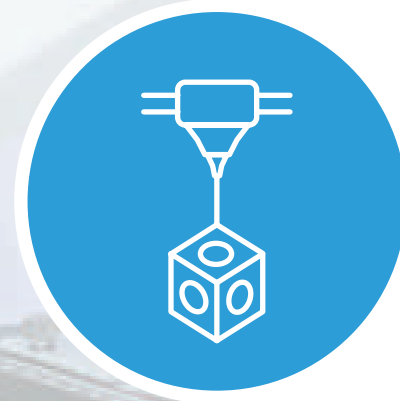
Bespoke eco-centric Design

ARC Marine are at the forefront of eco-centric design worldwide. Having developed and patented the award-winning Reef Cubes technology, innovation is a key pillar of our ethos. Reef Cubes are an extremely versatile basis for our design process, but we are not afraid to think outside the cube to meet the specific demands of individual projects.



Baseline Surveys & Biological Monitoring

Baseline surveys provide an image of the ecosystem prior to any works commencing. It measures key indicators before a project begins against which change and progress can be assessed. We then offer corresponding long-term monitoring led by ARC Marine's in-house science team: eDNA, baited video, ROV and diver surveys; data analysis and report writing.



Manufacturing & Transport

All manufacturing is performed by ARC's team of reef technicians & engineers. With our hands-on approach, we deliver the lowest-impact manufacturing processes with state-of-the-art materials and advanced casting techniques. Our facilities are UK based to supply the vast European markets. For overseas projects of sufficient size, we can manufacture closer to the deployment site lowering our carbon footprint.



Deployment & Lifting Operations

Low-cost & efficient deployment methodologies and safe lifting operations are essential to project success. We currently utilise standard lifting operations from offshore construction industries and have experience safely deploying our structures in the UK and Internationally.

INDUSTRIES & CLIENTS

Offshore Energy



Coastal Defence



Habitat Restoration



Eco Tourism



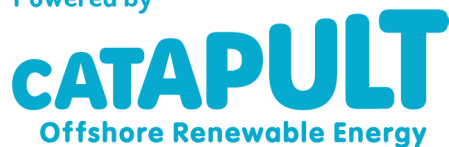
Aquaculture & Fisheries





**The Rich
North Sea**

Powered by

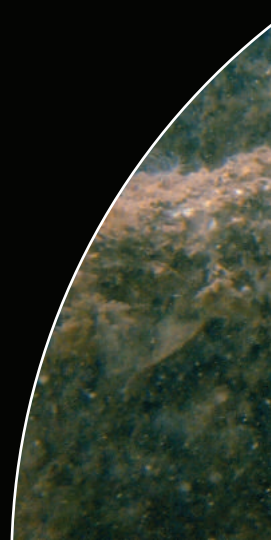


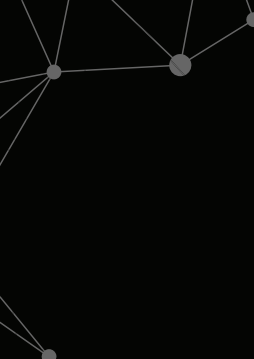
ORE Catapult



CORE VALUES & DRIVERS

We pride ourselves on being a “Deep Tech” high impact company whose primary goal is to lead the way in accelerating reef creation around the world. Our mission is to innovate and develop technology that leaves a positive effect on the marine environment contributing to the UN sustainable development goals shown below.





E
Designing for nature first, mankind second.



P
Game changing innovative technologies and applications.



I
Encouraging all ocean stakeholders to think sustainability and collaborate.



C
Conserving marine biodiversity whilst having fun.



S
Informed decision making based on research.



H
Practical delivery focused solutions that add value.



O
Passionate about making a positive difference, forever.

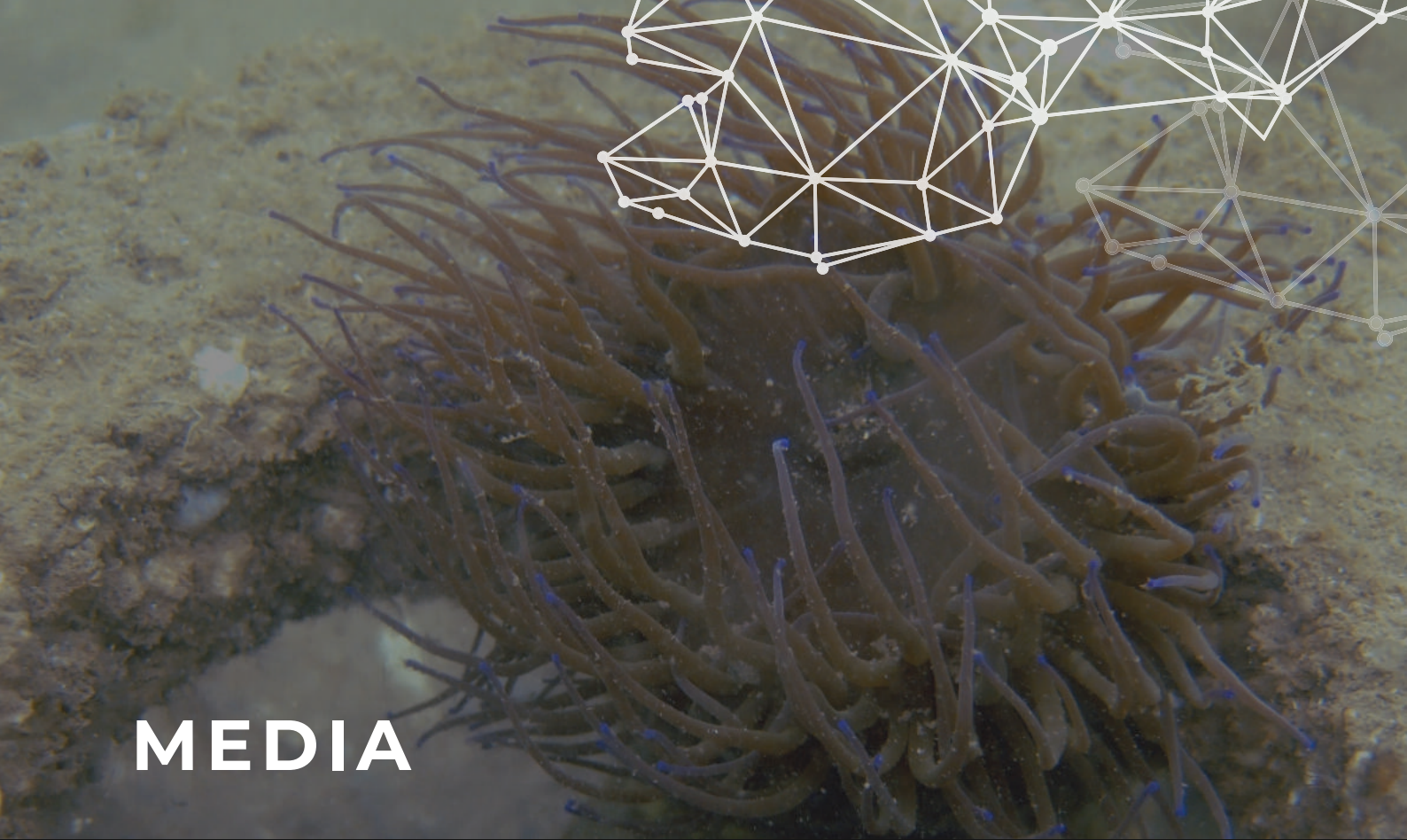


R
Professionals who always under promise and over deliver.



E
We always believe in doing the right thing (even underwater when no one is looking)





MEDIA





ACHIEVEMENTS



Maritime UK Award

Start up of the year winners 2019



SPE Offshore Achievement Awards

Highly commended in HSE Innovation Category 2020

“Nature inclusive designs to lower life cycle costs and maximise positive marine impact from offshore construction projects”

OUR TEAM

“ARC Marine is passionate about making a significant difference to our oceans on a global scale and is committed to making every reef project an environmental and commercial success for all parties”

We seek to recruit and retain dedicated professionals who care about the impact we are making on ocean health. Most of our team are keen SCUBA divers and have witnessed first-hand just how much the ocean needs habitat enhancement to bring back thriving eco-systems. We also understand the need to plan and execute projects safely that deliver innovative solutions to protect man made assets and the fragile marine environment within which we operate. Our team includes commercial divers, fishers, marine scientists, engineers and business personnel who share a common belief that together we can and will make a lasting difference.



BOARD OF DIRECTORS



Tom Birbeck

CEO

Co-founder. Extensive research into man-made reefs led to the prototyping and subsequent invention of Reef Cubes®.



James Doddrell

CTO

As co-founder, James spent the past 5 years designing and developing ideas to replenish global reefs. Lead inventor of Reef Cubes®.



Steve Wright BSc (Hons) CEng

CCO

ARC Marine assisted his life-long passion to help the oceans. Co-founder of several multi-million pound oil & gas businesses.



Colin Black MSc

Non-Executive Director

Over 37 years in Oil, Gas & Energy, Managing Director of Carjon-NRG Ltd and UK Energy Technology Platform Partner.



Russell Toghill

Investor/Director

The first angel investor into ARC Marine. He shared the vision and provided the "seed" investment to explore further.



David Smith


CFO

Ex Senior Chartered Accountants Partner specialising in Business Development, Risk Mitigation, Practical Tax and commercial Legal.



reef cubes®





Reef Cubes® deliver sustainable, long term marine habitat benefits from subsea and shoreline construction projects

Since 2015, ARC Marine has been experimenting and testing with numerous prototypes to optimise the configuration. Today, we can provide an unmatched level of scour mitigation in addition to being a leading biodiversity enhancer.

Technical details available on request.

An underwater photograph of a coral reef. The scene is dominated by a large, branching coral structure on the right side, with several yellow-striped fish swimming around it. The water is a deep blue-green color, and the lighting is soft, highlighting the textures of the coral and the scales of the fish. The overall mood is serene and natural.

FIND OUT HOW ARC MARINE CAN HELP YOU ACCELERATE REEF CREATION

If you think your business would benefit from Reef Cubes®, or any of our other services, we would love to hear from you.



(+44) 1803 659195



hello@arcmarine.co.uk



arcmarine.co.uk



ARC MARINE, Brixham Laboratory,
Freshwater Quarry, Brixham, Devon, TQ5 8BA

