

PASSIVE SHOWER

Showers that save energy  
#The beauty of saving Energy

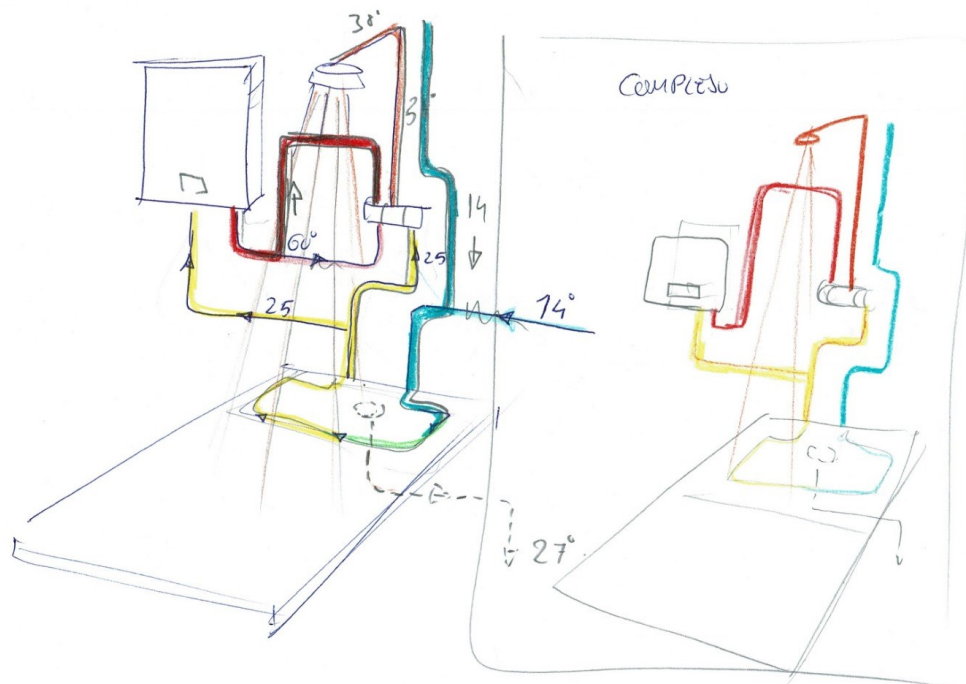
2020

## Why are we throwing energy to the drain?

Hot water production uses the same energy as heating

And we only use this energy 3 seconds and after that we throw this hot water to the drain.

**Passive Shower** is born from the need to recover that energy in a simple way to the user.



2/4

*«We need to look for the beauty of simple things,  
and distinguish the simple from the simplicity»*

René Lavand



## Shower tray with heat recovery system integrated

Efficiency and a Good use of the energy play a very important role in our homes.

Passive shower Ecotray recover more than 40% of the energy from the water that goes down the drain, and incorporate it in real time into the shower water so the saving is instant.





## Our system

We enjoy the shower at 40 degrees, and this water passes over our heat exchanger, at the same time the cold water from the inlet at 14 degrees come into our heat exchanger and goes outside at 25 degrees, this is the temperature of the water who comes to the mixer tap and mixes with the hot wáter 60 degrees to give to us the wáter at 40 degrees.

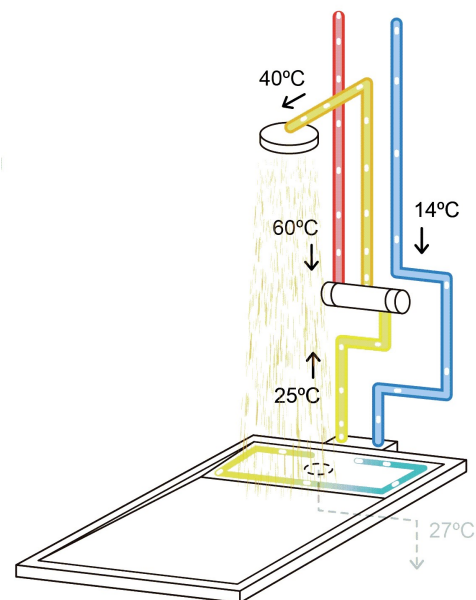
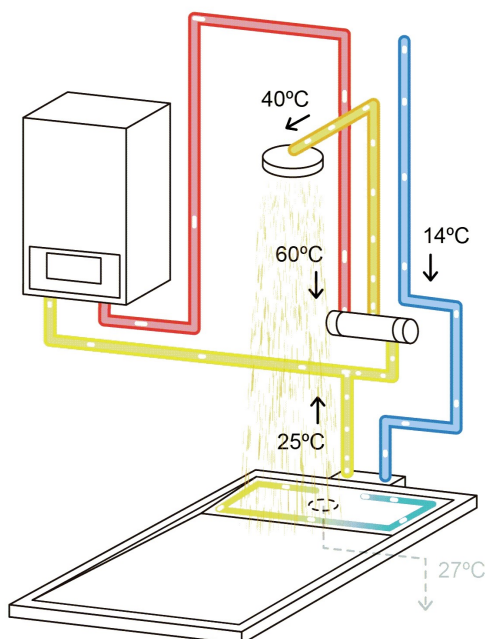


## Tipos de instalación

- Our shower tray can be mounted with any kind of hot water generator (Aerotherm, Boilers, Electric tank).
- Preheat the water who comes from the inlet with the energy of the water who goes to the drain makes that we use much less hot water and that we save 40% of energy, less CO<sub>2</sub> emissions and save money.

### Installation type A

- Preheat the cold water from the inlet who goes to the thermostatic tap of the shower.



### Installation type B

- Preheat the cold water from the inlet and the water who goes to the Hot water generator.

# Passive Shower Ecotray

## Mineral One

Passive Shower Ecotray made of mineral resins and sanitary gel coat with Stone.

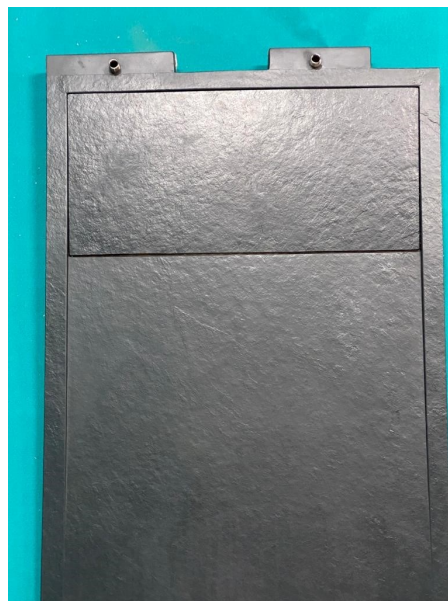
The Passive Shower Ecotray includes an estándar valve to the drain with screws .

Certifications PSE Mineral One:

- Passive House institut Germany.
- Antislippery test class 3 .
- CE conformity.

Colors :

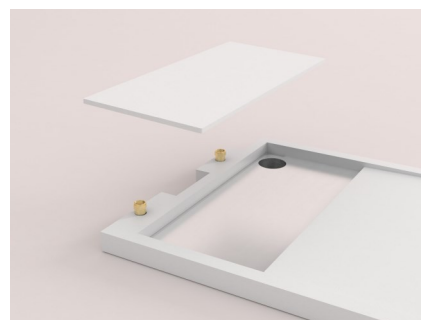
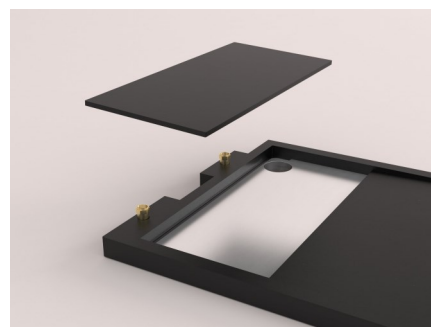
- White (RAL 9003)
- Graphito (RAL 7016)
- Grey (RAL 7030)
- Cream (RAL 9001)



Sizes :

Length and width from :

100x80	100x90
110x80	110x90
120x80	120x90
130x80	130x90
140x80	140x90
150x80	150x90
160x80	160x90
170x80	170x90



# Passive Shower Ecotray

## Krion® One

Passive Shower Ecotray krion®

The Passive Shower Ecotray includes an estándar valve to the drain with screws .

Certifications PSE Krion® One:

- Passive House institut AGermany
- Antislippery Class 3 .
- CE conformity

Colors:

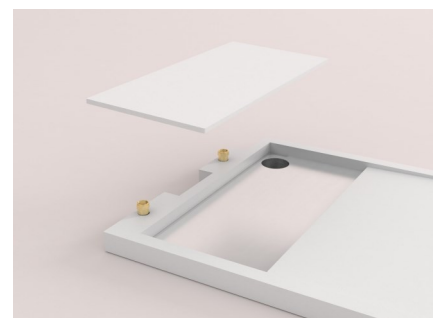
- Blanco Silk
- <https://www.krion.com/es/propiedades>



Sizes :

Length and width from :

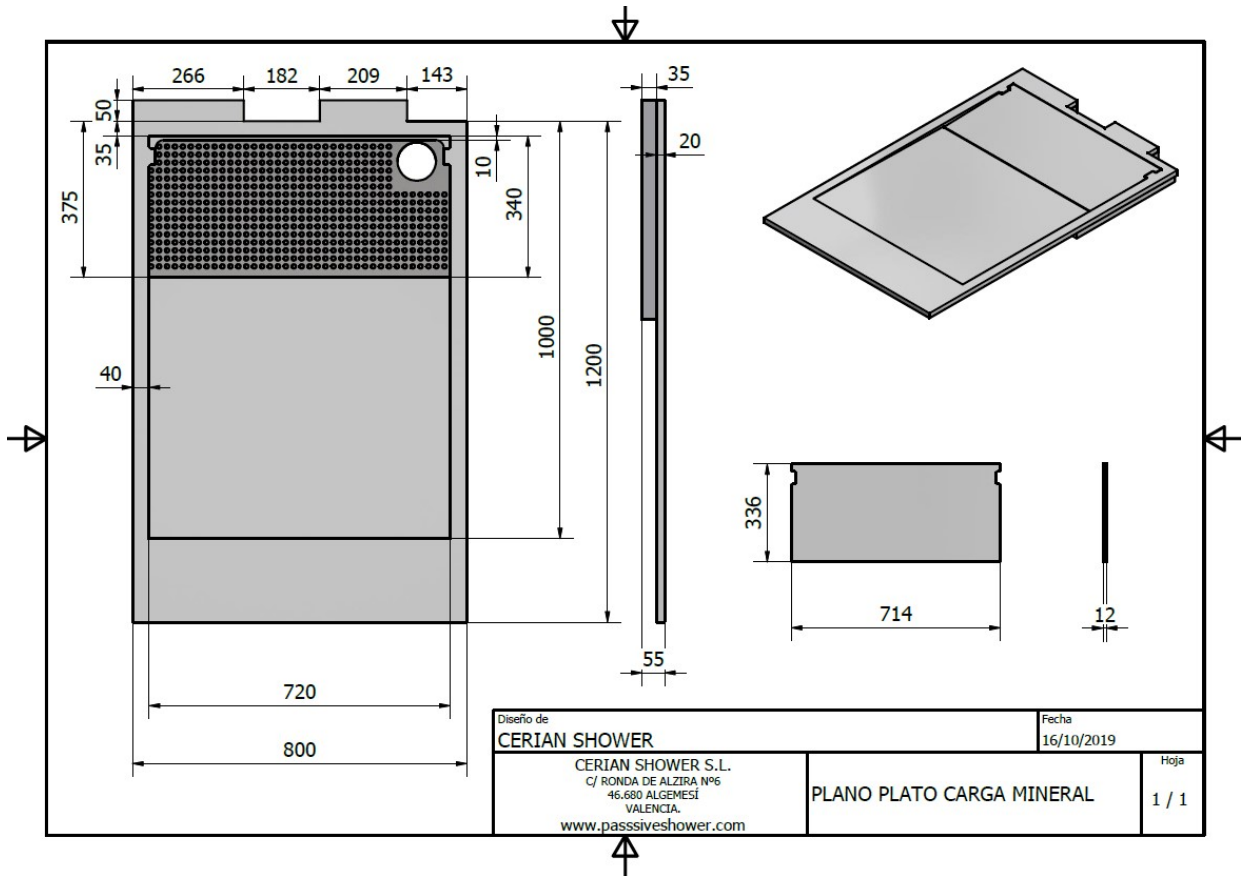
100x80	100x90
110x80	110x90
120x80	120x90
130x80	130x90
140x80	140x90
150x80	150x90
160x80	160x90
170x80	170x90





# Technical drawings

## Passive Shower Ecotray







PASSIVE SHOWER

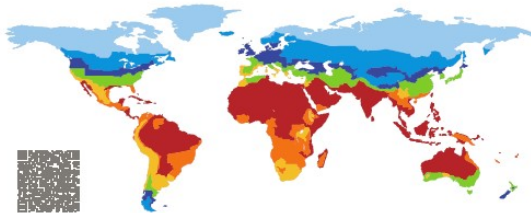
# Certifications

## Passive Shower Ecotray



**CERTIFICATE** Passive House Institute  
Dr. Wolfgang Feist  
64283 Darmstadt  
Germany

Certified Passive House Component  
Component-ID 1486sr03 valid until 31st December 2020




Category: **Shower Water Heat Recovery**  
Manufacturer: **Cerian Shower S.L., Algemesi, Spain**  
Product name: **PASSIVE SHOWER ECOTRAY ONE**

**This certificate was awarded based on the following criteria:**  
Tested under standard boundary conditions<sup>1</sup> the system reduces the useful energy demand for shower by  
**33 % ≥ 30 %**

**Further properties**  
Pressure drop tap water at 8 l/min: 0.32 bar  
Connection tap water: 1/2"  
Connection waste water: DN 50

steady-state efficiency
40 %
effective dead time
5 s
design flow rate
8 l/min



<sup>1</sup>Balanced flow rates, cold water temperature 10°C, Temperature at shower head 40°C, waste water temperature 35°C, negligible pipe length, shower time 6 min, flow rate 8 l/min

all climate zones  
**phC**  
**CERTIFIED COMPONENT**  
Passive House Institute

Passive House efficiency class: phE, phD, **phC**, phB, phA, phA+  
[www.passivehouse.com](http://www.passivehouse.com)

**kiwa**

Number: 103086/01 Replaces: -  
Issue date: 18-10-2019 Scope: NEN 7120+C2:2012/C5:2014  
Report number: 190800671

**Declaration regarding the efficiency of a shower heat recovery unit**

This declaration is based on a single examination by Kiwa on product:  
**Passive Shower Ecotray One**  
Supplier: **Cerian Shower S.L. Spain**

The product was tested according to the procedure stated in annex B of the NEN 7120+C2:2012/C5:2014.

Class	Flow (l/min)	Volume (l)	Efficiency (%)	Flow resistance (ΔP) (bar)
2	5.8	46	40.7	0.168
3	9.2	73	37.0	0.410
4, 5, 6	12.5	100	34.4	0.735
-	11	88	35.3	0.641

This declaration does not pass a judgment on other products supplied by the manufacturer.

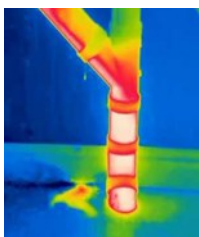
Allard Slomp  
Productmanager  
  
Kiwa Nederland B.V.



Kiwa Nederland B.V.  
Wilmersdorf 50  
Postbus 137  
7300 AC Apeldoorn  
Tel: +31 88 998 23 85  
Fax: +31 88 998 36 85  
E-mail: [zuo@kiwa.nl](mailto:zuo@kiwa.nl)  
[www.kiwa-nl.nl](http://www.kiwa-nl.nl)

Cerian Shower S.L. Spain  
Ronda Azira No 6  
46680 Algemesi  
Spain  
Tel: +34 608 95 13 57  
E-mail: [info@passiveshower.com](mailto:info@passiveshower.com)  
[www.passiveshower.com](http://www.passiveshower.com)

**DECLARATION**



Directive (EU) 2018/2001



Código técnico Edificación  
Diciembre 2019



PASSIVE SHOWER