

# SHIP REALITY



## ShipMR-Design

Spatial Intelligence & Design Automation Software





# ShipMR-Design

## SPATIAL INTELLIGENCE

- **Cloud-based** interactive 3D design software with end-to-end encryption
- Native **point cloud** integration
- Component **sense**
- **Feature** identification & **clash** detection
- Extensive **database** of ship piping components
- **Customizable** parametric components
- **Export** to IGES, STEP and native 3rd party CAD format
- **Report** generation, B.O.M.

## GAMIFICATION

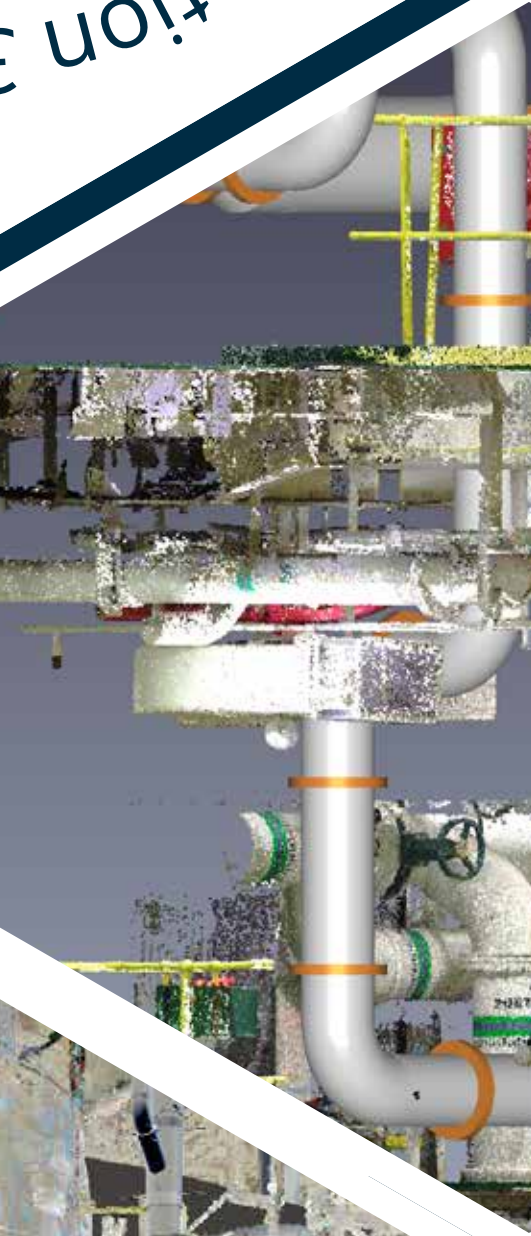
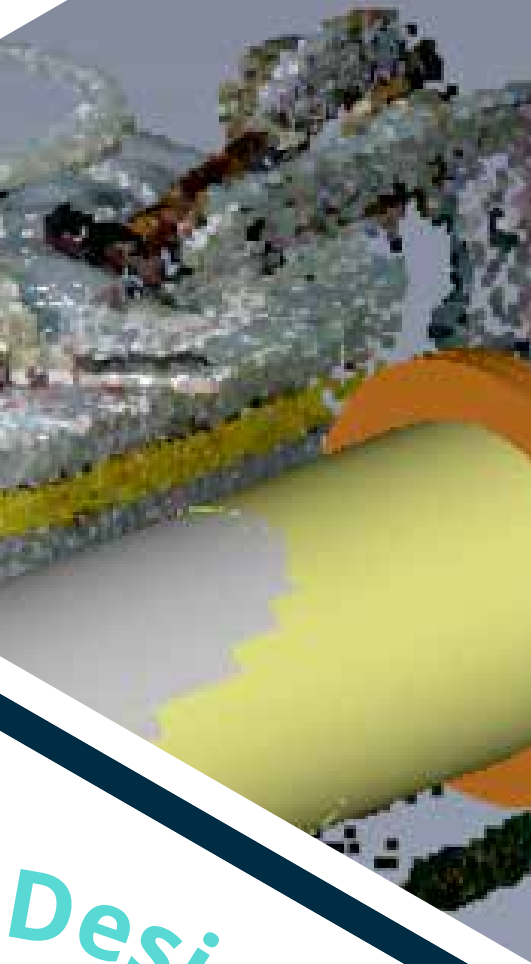
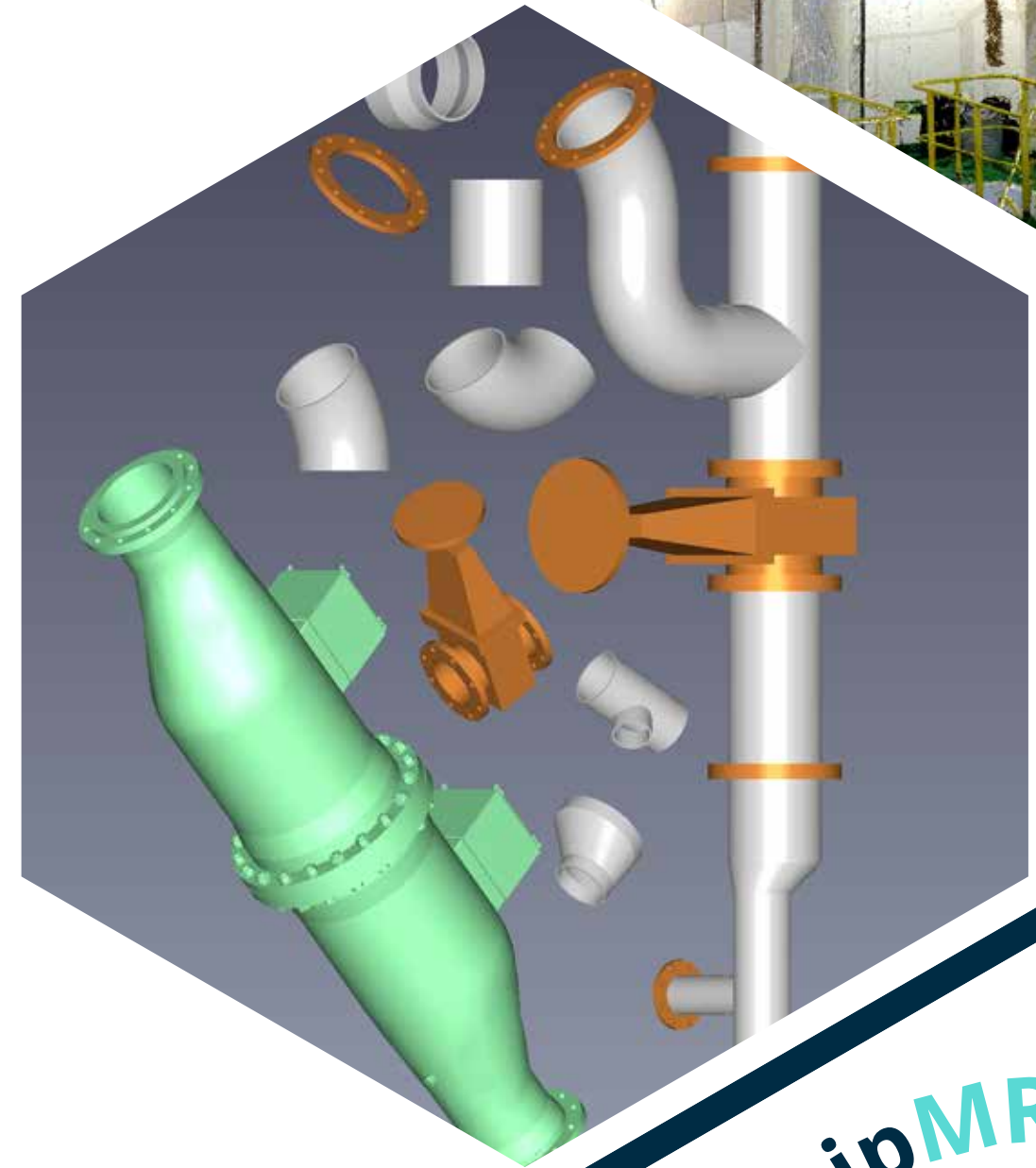
- Building blocks, **drag n' drop** assembly
- Component **filtering** based on selection
- Unique **optimal pipe routing** algorithms
  - Real-time **generative design**
  - Define **boundary conditions** (maintenance spaces, penetration areas)
  - **Automated** specification-based spool generation

## EXTENDED REALITY

- Virtual Reality (**VR**) & Mixed Reality (**MR**) **interoperability**
- **VR** design review and remote training
- **VR** collaborative immersive visualization
- **MR**-assisted installation monitoring

## SUPPORT

- **Onboarding procedure** to familiarize new users
- Comprehensive **training material**



Website



YouTube



LinkedIn



Request demo  
[design@shipreality.com](mailto:design@shipreality.com)